

Lodi Cemetery Columbarium Landscaping Project

Eagle Project Description

Vince Olsen Troop 416

For my Eagle Scout Project I will be doing the landscaping in front of the columbarium recently put in at the Lodi Cemetery. I began looking for an Eagle Project and started asking around. I had my dad ask some of his patients if they knew of any large projects that needed to be done that could be done by an Eagle Scout candidate. He put me in contact with Margaret Canham who is on the Lodi Cemetery committee. I met with Mrs. Canham and she expressed interest to have landscaping done around the columbarium that was soon to be built. After discussing this with my scoutmaster, I agreed to take on this project. The columbarium sits on rough ground which is mostly weeds or brush. Behind the columbarium is an old fence and a lumber pile that is not property of the cemetery. The columbarium itself is about 8 feet wide and 3 feet deep. It is a cement slab with a brick housing on top with the actual columbarium unit inside the housing.

I have designed the landscaping to enhance this area. It will include a brick patio, two cement benches, two cement vases, and be surrounded by 8 trees and grass. For the completion of this project, I have created a materials list that details the amount of and price of the materials necessary. I am not sure where most of my materials will be purchased. I need to raise most of the money myself so I will be doing fundraisers, such as can and bottle drives, and asking local businesses for donations to obtain enough money or supplies. Bill Bell, owner of Bell Construction, has agreed to be my mentor

and will help me throughout my project. Tom Stempky, owner of Stempky Gardens, has agreed to help me by donating trees and bricks as well as his landscaping knowledge and experience. I will begin work once the ground has thawed in the spring (late March to early April) due to the fact that I will have to be digging for a large portion of my project. I anticipate this project taking 30-40 hours to complete so spread over successive weekends, I hope to be done by mid-June.

A factor that could slow me down is the weather. If it rains while we are trying to dig holes it could completely undermine our efforts. Another factor is amount of help. If scouts or others sign up to help but cancel at the last minute it could leave me short on workers slowing my project significantly. I will be asking the troop and some of my friends from outside the troop for help on this project.

I will need to be able to raise, track, and manage finances for this project to be successful. Also, I will need to be able to communicate with and organize a large group of people for this project to be finished efficiently. I learned how to track and manage finances through the completion of the personal management merit badge. The skills I acquired during the completion of the communications merit badge will help me organize a large group of people.

Lodi Cemetery

Columbarium

Landscaping Project

Project Phases
Vince Olşen Troop 416

Phase 1- Preparing the site

- Set up safety table
 - Directions to hospital
 - First aid kit
 - Safety goggles
 - Work gloves
 - Water and snacks for workers
- Tear up and level ground with rototiller and Bobcat

Phase 2- Laying the bricks

- Set up safety table (as above)
- Lay Brick
 - Establish Base
 - Dig 6 to 10 inches down
 - Fill with slag
 - Level the slag
 - Lay bricks
 - Hold together with edging
 - Level the brick
 - Fill gaps with silica sand
- Install benches in the brick patio
- Place urns on brick near columbarium

Phase 3- Planting

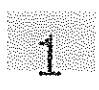

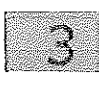


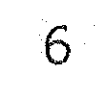
- Set up safety table (as above)
- Plant juniper trees- will need a shovel, and water from nearby house w/ 200ft of hose
 - Dig one large hole for pine tree
 - Fill hole with water
 - Place tree in hole and refill with topsoil

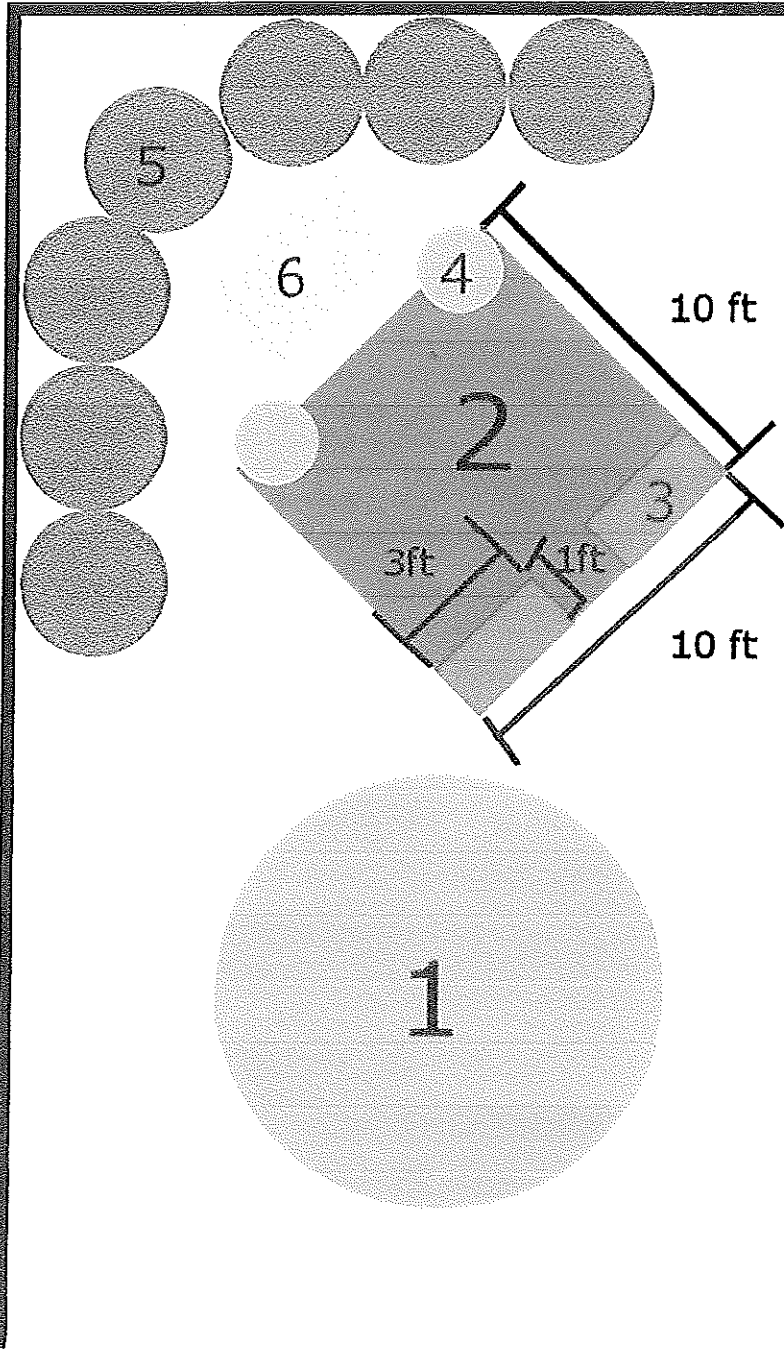
- Water the tree again
 - Repeat for all pines
- Planting shade tree- will need a shovel, and water from nearby house w/ 200ft of hose
 - Dig a large hole
 - Fill it with water
 - Place tree in hole and refill with topsoil (approx. 5 yds.)
 - Water the tree again
- Planting grass- will need water from nearby house w/ 200ft of hose and sprinkler attachment
 - Prepare topsoil (3-4 inches)
 - Sprinkle grass seed
 - Lay straw on top

Phase 4- Clean up and maintenance

- Clean up any tools/extra materials left over
- Go back after a few weeks to water trees again
- Water grass

Key

-  1 Shade Tree
-  2 Brick
-  3 Bench
-  4 Large Urn
-  5 Pine trees
-  6 Columbarium



Material List and Budget

Vince Olsen Troop 416

Item	Amount	Cost each	Total cost	Anticipated donation
Trees (7junipers, 1 shade)	8		\$1,500	\$1,500
Bricks	10x10ft		\$500	\$500
Slag sand	3-4 yds		\$100-150	0
Benches	2	\$200	\$400	0
Grass seed	2 bags	\$50	\$100	0
Top soil	3-4 yds	\$40	\$120-160	0
silica sand	1 bag		\$30	0
Concrete vases	2	\$100	\$200	0
Readymix cement	2 bags	\$45	\$90	0
Wheelbarrow	1	owned		0
Mulch	3-4 yds		\$100-150	0
Straw	5 bales	\$2	\$10	0
Riding rototiller	1/2 day		\$100	0
Total cost			\$3250-3340	
Anticipated donation total				\$2000
Amount needed to complete project			\$1250-1340	